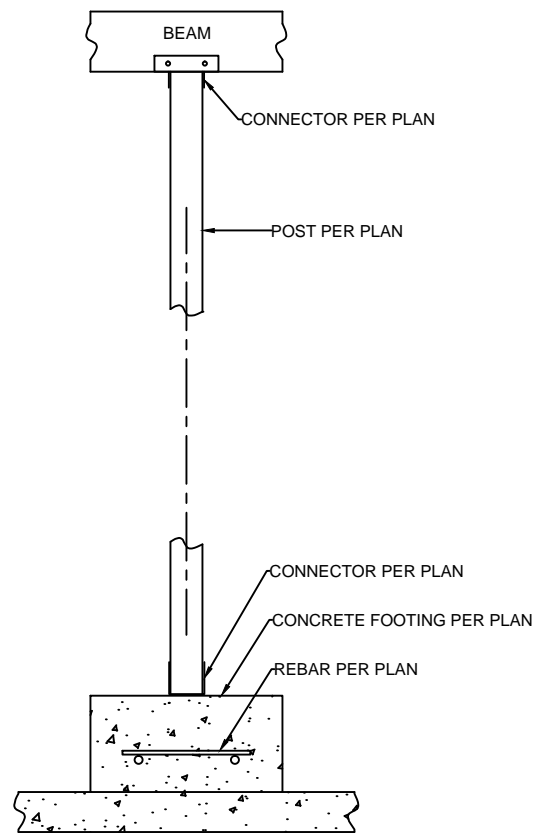
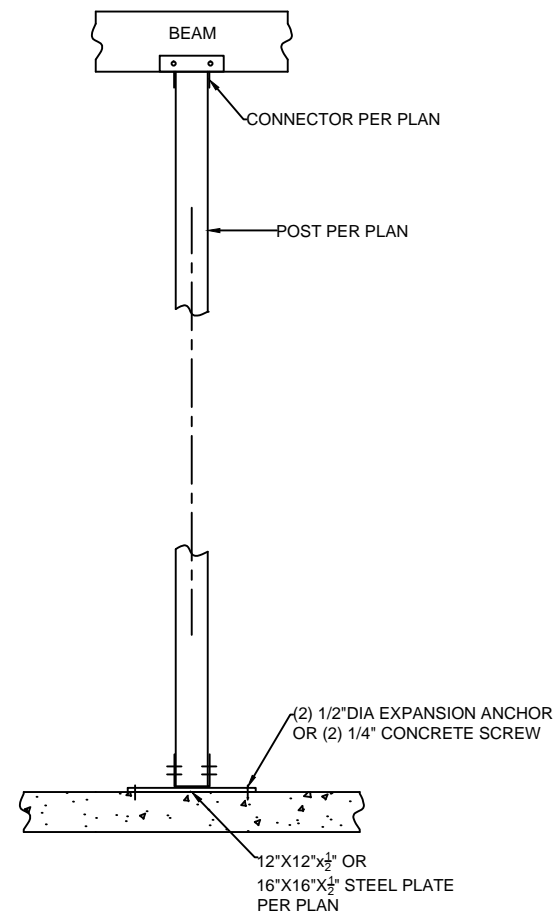


FLUSH FOOTING OPTION
SCALE 1/2"=1'

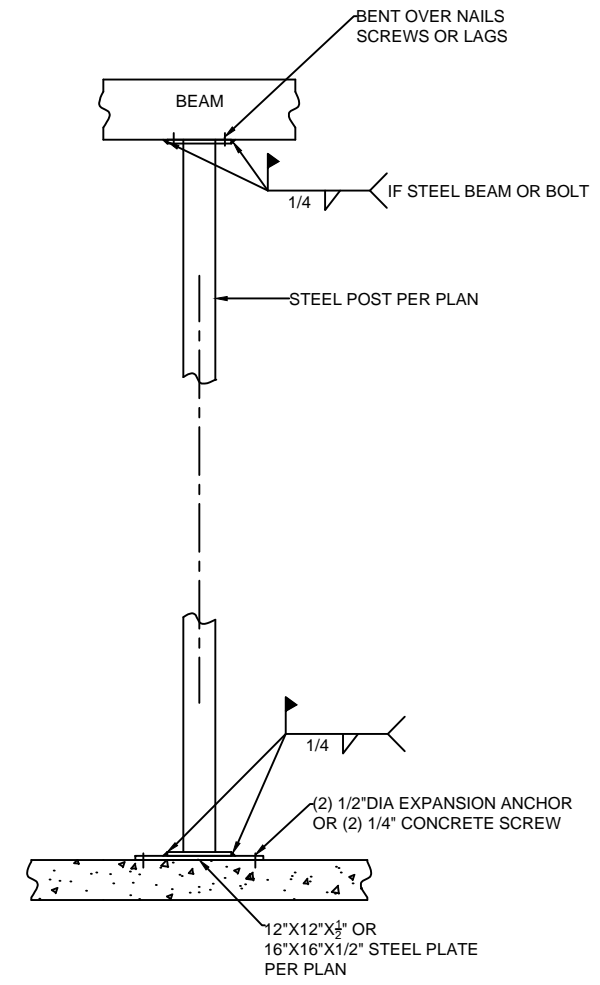


RAISED FOOTING OPTION
SCALE 1/2"=1'



STEEL PLATE OPTION W/ WOOD POST
SCALE 1/2"=1'

STEEL PLATE AVAILABLE AT CURTIS LUMBER



STEEL PLATE OPTION W/ STEEL POST
SCALE 1/2"=1'

STEEL PLATE AVAILABLE AT CURTIS LUMBER

NOLAN ENGINEERING PLLC
RICHARD E. NOLAN, P.E., LICENSE # 083929
NEW YORK STATE LICENSED PROFESSIONAL ENGINEER
383 RINGSDEN ROAD - BURDEN, N.J. 07015
STATEVILLE@NOLANENGINEERING.COM • WWW.NOLANENGINEERING.COM

WARNING:
IT IS A VIOLATION OF NEW YORK STATE EDUCATION LAW FOR ANY PERSON, UNLESS ACTING UNDER THE DIRECTION OF A LICENSED PROFESSIONAL ENGINEER, TO ALTER IN ANY WAY ANY PLANS, SPECIFICATIONS, PLOTS OR REPORTS TO WHICH THE SEAL OF PROFESSIONAL ENGINEER HAS BEEN APPLIED.

DATE:	DESCRIPTION:	BY:

**INSTA-FOOTING
DETAIL**
AVAILABLE AT CURTIS LUMBER

START DATE:

STAMP:


DATE: 4/9/2017

FILE:

PAGE CONTENT:
FOOTING DETAILS

DRAFTER: LEE ENGINEER: NOLAN

PAPER SIZE: B (11"x17") SCALE: AS NOTED

SHEET: 1 OF 1